

EyeQue™

Insight

Seeing Clearly?

Take charge of your family's eyesight with the EyeQue Insight visual acuity screener.



Insanely easy to use and incredibly accurate, the EyeQue Insight™ saves time, saves money, and puts you in control of tracking vision changes for you and your family.

Perfect for kids six and above and adults too! A fun, super-fast test to determine the sharpness of distance vision.

The binocular goggles attach to a smartphone and the myEyeQue application powers a visual acuity test based on the standardized tumbling "E" Snellen chart.

A kids mode is available with lively animations and audio cues to keep children engaged. Randomization of "E" patterns eliminate memorization. Patented optical virtual fixed-distance design improves accuracy over traditional wall chart and other computer/mobile based tests.

- **Screen vision for 20/20 to 20/400 in under 3 minutes;** provides exact measures of single and dual eye performance
- **Create a digital vision history** where a change indicates that a doctor's visit would be advised
- **Test your current glasses or contacts** to determine if an updated prescription is required
- **Instantly record, securely store and share results**
- **Run in gamified mode for children,** or simplified mode for adults
- **One EyeQue Insight can be shared with many people,** making it a value for families and suitable for testing large groups



Convenient



Affordable



Accurate



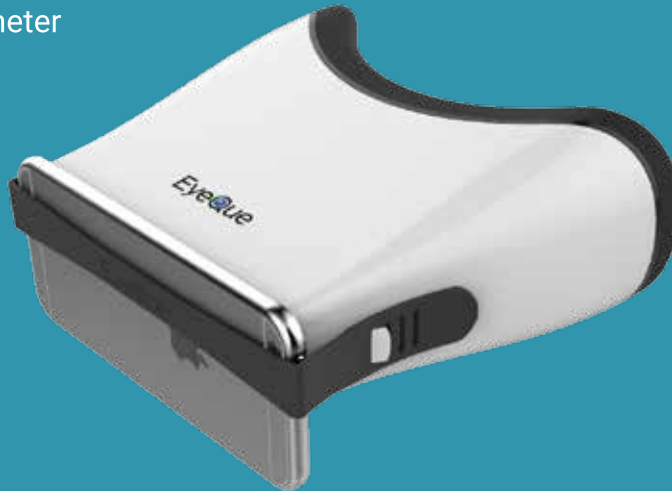
Insightful



Safe & Fun

BINOCULAR GOGGLES
simulate 20 feet / 6 meter
distance

attach to your
SUPPORTED
SMARTPHONE
& run the free
myEyeQueVA app



EYEQUE CLOUD™
securely stores digital
vision records



your annual subscription
entitles you to
UNLIMITED TESTS
on any EyeQue screener

But wait, there's more.

Integrated pupillary distance (PD) ruler further improves accuracy and captures PD measurement, necessary for ordering corrective glasses.



Kids mode, hosted by Seymour, an animated friend engages children with jokes, tips, and rewards.



Scalable platform supports future tests and software enhancements.

Requirements

Supported Smartphone

Smartphone requires minimum screen size of 4.7 inches (diagonal) and at least 300 ppi (pixels per inch); 800+ smartphones supported worldwide.

Individual Annual Subscription

Share the Insight with many people. An active subscription is required for each person to ensure accurate records. Each Insight purchase comes with one year free service for the first user account.

Internet Connection

Smartphone must be connected to the Internet for results to be added to the tester's vision history. Tests can be performed without Internet connectivity for informational purposes or manual recording.

myEyeQueVA app

Download the free application from Apple's App Store or Google Play, (available January 2018).

EyeQue™
see beyond

eyeque.com
+1.510.455.8168 t
info@eyeque.com

f | t @EyeQueCorp